

DELETING DIAL-UP NETWORKING ACTIONS

To delete a **QuickKeys Dial-Up Networking Action**:

1. Select the My Actions tab in the QuickKeys Editor.
2. Right-click the Action you want to delete.
3. Select Delete from the context menu that appears.
4. Choose Yes at the Confirm Delete prompt. The Action is immediately cleared from the Actions list.

NETWORK DRIVES

The Network Drives Action is useful if you need to access several different network drives on a daily basis. The options available in the Network Drives Action include:

- Connect to a network volume
- Disconnect from a network volume
- Toggle connection

SETTING UP THE NETWORK DRIVES ACTION

There are two ways to create and edit QuickKeys Network Drives Actions: use the Setup Wizard or use the Action Properties dialog.

Using the Setup Wizard

To use the Setup Wizard, select the Setup Wizards tab in the QuickKeys Editor and click the Network Drives button. Read each of the dialogs in the Setup Wizard and follow the instructions. At the beginning of the Setup Wizard, you are presented with options to Create an Action, Edit an Action, or Delete an Action. The setup for each of these options is explained within the Setup Wizard.

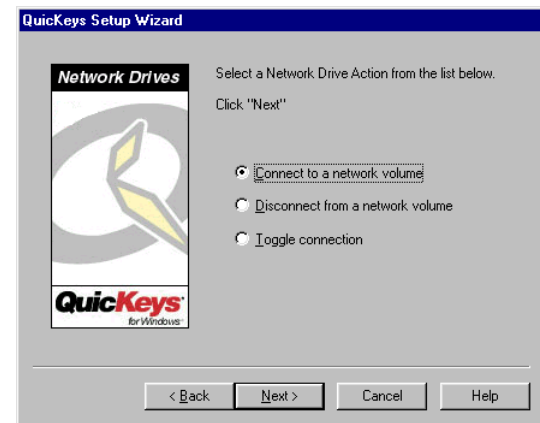


FIGURE 151: This dialog appears when you click the Network Drives button in the Setup Wizards tab and choose to create or edit a Network Drives Action.

Using the Action Properties Dialog

The following instructions assume you have the Always use Setup Wizards for editing check box cleared in the Options dialog. See page 30 for more information.

To use the Action Properties dialog to create or edit a Network Drives Action, follow these steps:

1. Select Create>Network Tools>Network Drives.
2. Choose a network drive from the Action-specific properties pane of the dialog.
3. In the General tab of the Action Properties dialog, a name is automatically assigned to the Action. You can use the assigned Action name or type a different name.

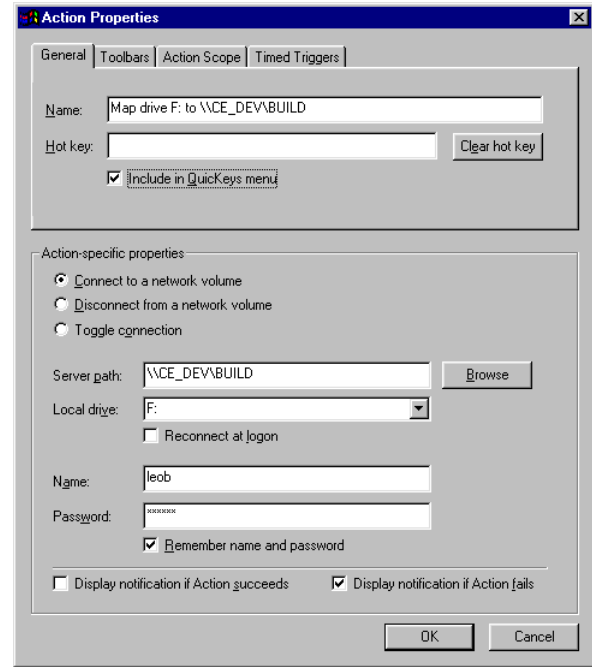


FIGURE 152: The Network Drives Action Properties dialog appears when you select the Network Drives Action from the Create menu, or when you double-click an existing Network Drives Action in the My Actions tab.

4. If you want to trigger this Action from the QuickKeys menu, select the Include in QuickKeys menu check box.
5. Click OK. Your new Action immediately appears in the My Actions tab.
6. Close the QuickKeys Editor and trigger the Network Drives Action from the QuickKeys menu or with whatever other type of trigger you assigned to this Action. The network drive you specified is immediately selected.

NETWORK DRIVES OPTIONS

Below is a description of the Action-specific properties available with the Network Drives Action:

Connect to a network volume—Connects you to a network volume.

Disconnect from a network volume—Terminates your connection to a network drive.

Toggle connection—Alternately connects and disconnects you from a network volume or drive.

Server path—The directory path of the network volume.

Browse—Click the Browse button to navigate to the location of the network volume.

Local drive—The drive letter your computer will use to identify the selected network volume. Do not select any drive letters that are already in use.

Reconnect at logon—Choose this option when you want to retain drive mapping information, even after you restart your machine. If this option is *not* checked and you restart your machine, you must trigger the Network Drive Action to remap the drive.

Name—The user name you use to login to the selected network volume.

Password—The password you use to login to the selected network volume.

Remember name and password—Select this option if you do not want to be prompted for your name and password each time you trigger this Network Drives Action.

Display notification if Action succeeds—Displays a message alerting you that your map/unmap action was successful.

Display notification if Action fails—Displays a message alerting you that your map/unmap action was *not* successful.

More About Network Drive Actions

Since QuickKeys Actions are stored under your login preferences, your user name and password information for network drives are secure as long as other users do not know your network login name and password.

DELETING NETWORK DRIVE ACTIONS

To delete a QuickKeys Network Drives Action:

1. Select the My Actions tab in the QuickKeys Editor.
2. Right-click the Action you want to delete.
3. Select Delete from the context menu that appears.
4. Choose Yes at the Confirm Delete prompt. The Action is immediately cleared from the Actions list.